

GM

series general machining end mills

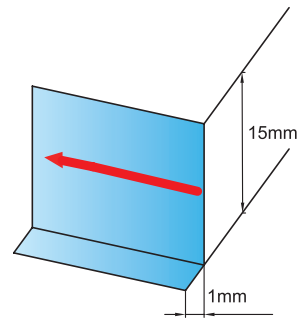
Wide application: high efficiency machining can be achieved from common steel to pre-Hardened steel.

Optimized structure: reasonable combination of sharp cutting edge and tool strength makes cutting much light and fast, achieving longer tool-life.

Complete in category: can realize application from rough machining with high metal removal rate to finish machining with high surface quality.

Complete in specification: the minimum specification is 0.3 mm, easily complete machining even though the micro part of workpiece.

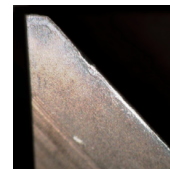
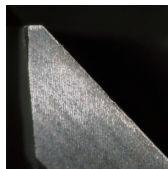
- Tool type: GM-4E-D10.0
- Size: $\varnothing 10.0\text{mm}$
- Workpiece material: NAK80 (40HRC)
- Rotating speed: 3200r/min (100m/min)
- Feed speed: 640mm/r (0.2mm/r)
- Axial cutting depth: $A_p=15\text{mm}$
- Radial cutting depth: $A_e=1.0\text{mm}$
- Cutting style: side milling (down milling)
- Cooling system: air blow
- Machine: MIKRON UCP 1000



■ Cutting edge abrasion and surface quality of workpiece

End mills	GM-4E-D10.0	Similar product of company A	Similar product of company B
Cutting length	60m	20m	60m

Cutting edge abrasion



Workpiece surface quality

